



MUTHAYAMMAL ENGINEERING COLLEGE

(An Autonomous Institution)

(Approved by AICTE, New Delhi, Accredited by NAAC, NBA & Affiliated to Anna University)

Rasipuram - 637 408, Namakkal Dist., Tamil Nadu



Student Satisfaction Survey

Guidelines for Students

NAAC (National Assessment and accreditation council) is conducting a Student Satisfaction Survey regarding Teaching – Learning and Evaluation, which will help to upgrade the quality in higher education. A student will have to respond to all the questions given in the following format with her/his sincere effort and thought. Her/his identity will not be revealed.

A) Please confirm this is the first and only time you answer this survey.

a) Yes b) No

B) Age: C) College Name:

D) Gender: a) Female b) Male c) Transgender

E) What degree program are you pursuing now?

a) Bachelor's b) Master's c) MPhil
d) Doctorate e) Other ()

F) What subject area are you currently pursuing?

a) Arts b) Commerce c) Science
d) Professional e) Other: ()

Instructions to fill the questionnaire

- All questions should be compulsorily attempted.
- Each question has five responses, choose the most appropriate one.
- The response to the qualitative question no. 21 is student's opportunity to give suggestions or improvements; she/he can also mention weaknesses of the institute here. (Kindly restrict your response to teaching learning process only)

Criterion II – Teaching–Learning and Evaluation

Student Satisfaction Survey on Teaching Learning Process

Following are questions for Online Student Satisfaction Survey regarding Teaching Learning Process.

1. How much of the syllabus was covered in the class?
 - 4 – 85 to 100%
 - 3 – 70 to 84%
 - 2 – 55 to 69%
 - 1– 30 to 54%
 - 0 –Below 30%

2. How well did the teachers prepare for the classes?
 - 4 –Thoroughly
 - 3 – Satisfactorily
 - 2 – Poorly
 - 1 – Indifferently
 - 0 – Won't teach at all

3. How well were the teachers able to communicate?
 - 4 – Always effective
 - 3 – Sometimes effective
 - 2 – Just satisfactorily
 - 1– Generally ineffective
 - 0– Very poor communication

4. The teacher's approach to teaching can best be described as
 - 4– Excellent
 - 3 – Very good
 - 2 – Good
 - 1 – Fair
 - 0– Poor

5. Fairness of the internal evaluation process by the teachers.
 - 4 – Always fair
 - 3 – Usually fair
 - 2 – Sometimes unfair
 - 1 – Usually unfair
 - 0– Unfair

6. Was your performance in assignments discussed with you?
 - 4 – Every time
 - 3 – Usually
 - 2 – Occasionally/Sometimes
 - 1 – Rarely
 - 0– Never

7. The institute takes active interest in promoting internship, student exchange, field visit opportunities for students.
 - 4 – Regularly
 - 3 – Often
 - 2 – Sometimes
 - 1 – Rarely
 - 0 – Never

8. The teaching and mentoring process in your institution facilitates you in cognitive, social and emotional growth.
 - 4 – Significantly
 - 3 – Very well
 - 2 – Moderately
 - 1 – Marginally
 - 0 – Not at all

9. The institution provides multiple opportunities to learn and grow.
 - 4 – Strongly agree
 - 3 – Agree
 - 2 – Neutral
 - 1 – Disagree
 - 0 – Strongly disagree

10. Teachers inform you about your expected competencies, course outcomes and programme outcomes.
 - 4 – Every time
 - 3 – Usually
 - 2 – Occasionally/Sometimes
 - 1 – Rarely
 - 0 – Never

11. Your mentor does a necessary follow-up with an assigned task to you.
 - 4 – Every time
 - 3 – Usually
 - 2 – Occasionally/Sometimes
 - 1 – Rarely
 - 0 – I don't have a mentor

12. The teachers illustrate the concepts through examples and applications.
 - 4 – Every time
 - 3 – Usually
 - 2 – Occasionally/Sometimes
 - 1 – Rarely
 - 0 – Never

13. The teachers identify your strengths and encourage you with providing right level of challenges.
- 4 – Fully
 - 3 – Reasonably
 - 2 – Partially
 - 1 – Slightly
 - 0 – Unable to
14. Teachers are able to identify your weaknesses and help you to overcome them.
- 4 – Every time
 - 3 – Usually
 - 2 – Occasionally/Sometimes
 - 1 – Rarely
 - 0 – Never
15. The institution makes effort to engage students in the monitoring, review and continuous quality improvement of the teaching learning process.
- 4 – Strongly agree
 - 3 – Agree
 - 2 – Neutral
 - 1 – Disagree
 - 0 – Strongly disagree
16. The institute/ teachers use student centric methods, such as experiential learning, participative learning and problem solving methodologies for enhancing learning experiences.
- 4 – To a great extent
 - 3 – Moderate
 - 2 – Some what
 - 1 – Very little
 - 0 – Not at all
17. Teachers encourage you to participate in extracurricular activities.
- 4 – Strongly agree
 - 3 – Agree
 - 2 – Neutral
 - 1 – Disagree
 - 0 – Strongly disagree
18. Efforts are made by the institute/ teachers to inculcate soft skills, life skills and employability skills to make you ready for the world of work.
- 4 – To a great extent
 - 3 – Moderate
 - 2 – Some what
 - 1 – Very little
 - 0 – Not at all

19. What percentage of teachers use ICT tools such as LCD projector, Multimedia, etc. while teaching.

4 – Above 90%

3 – 70 – 89%

2 – 50 – 69%

1 – 30 – 49%

0 – Below 29%

20. The overall quality of teaching-learning process in your institute is very good.

4 – Strongly agree

3 – Agree

2 – Neutral

1 – Disagree

0 – Strongly disagree

21. Give three observation / suggestions to improve the overall teaching – learning experience in your institution.

a)

b)

c)



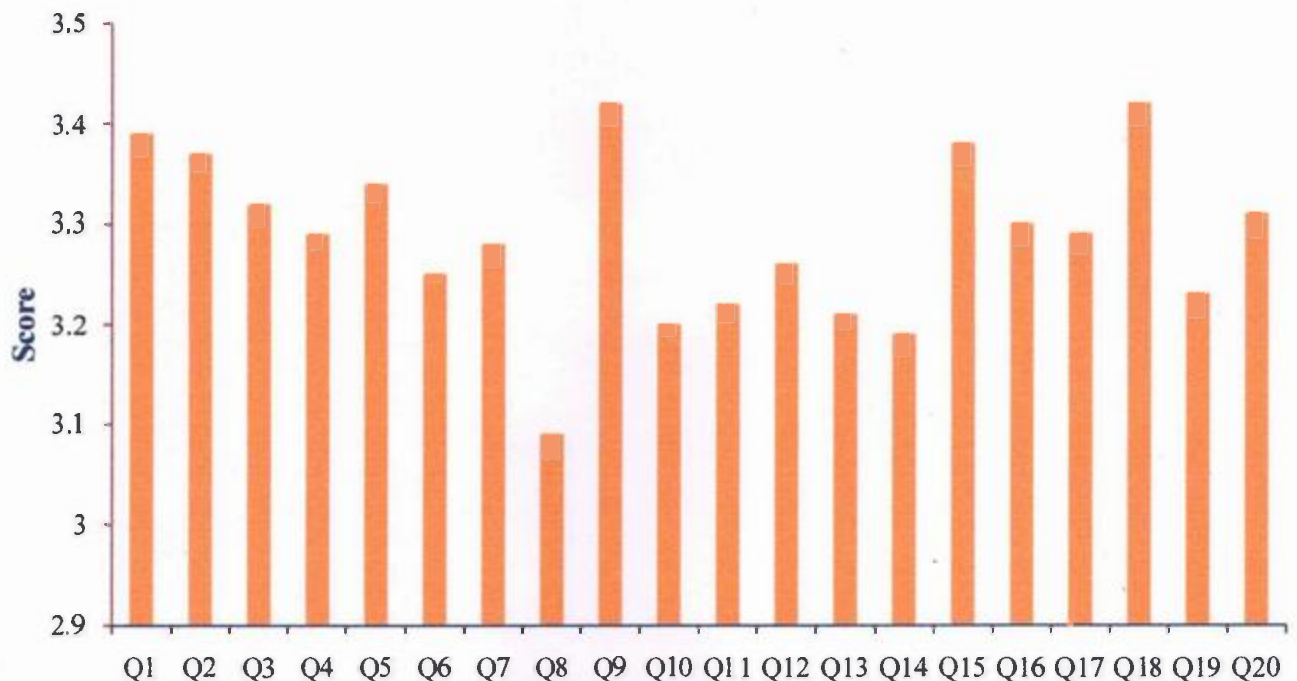
STUDENT SATISFACTION SURVEY (2021-22)

Student Satisfaction Survey (SSS) was conducted among the students with Questionnaire framed based on NAAC Guidelines. Students have provided the rating on various parameters mentioned in the Questionnaire. The response is provided in the chart.

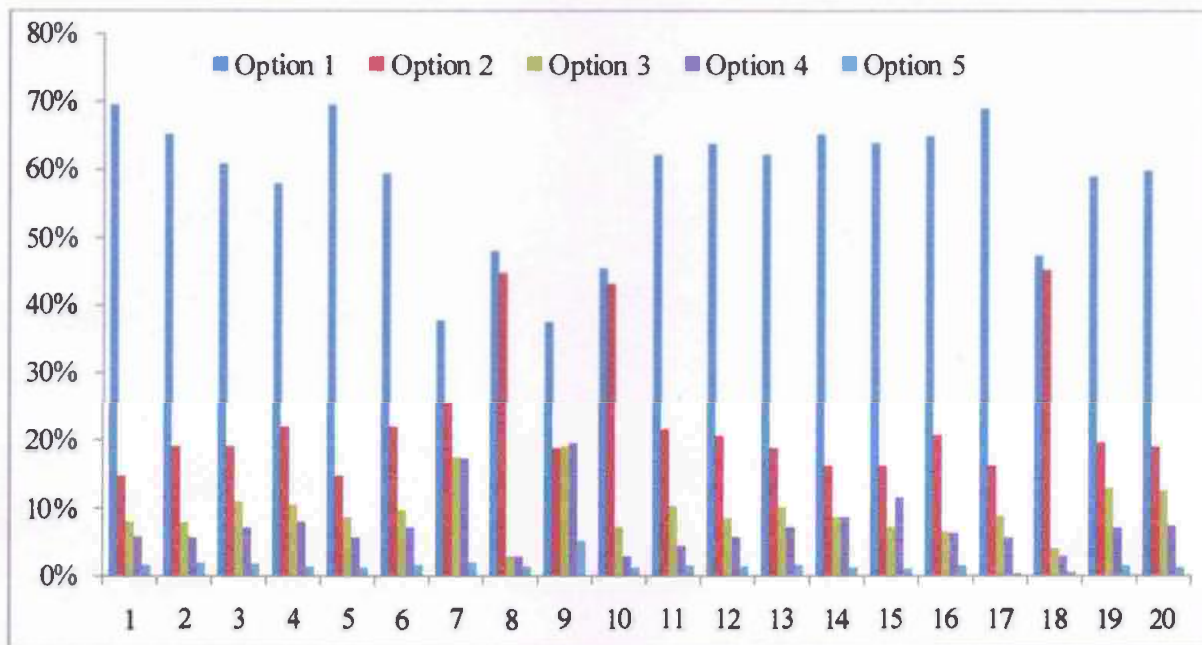
Questionnaire

Q1	Syllabus covered	Q11	Mentoring
Q2	Teacher's preparedness	Q12	Illustrative Methodology of Teaching
Q3	Teacher's Communication skill	Q13	SWOT Analysis
Q4	Teaching Approach	Q14	SWOT Analysis
Q5	Fairness of the Internal Evaluation	Q15	Quality Improvement of the Teaching Learning Process
Q6	Discussion on Assignments Performance	Q16	Methodologies for Enhancing Learning Experiences
Q7	Promotion of Co-curricular Activities	Q17	Extracurricular Activities
Q8	Teaching and Mentoring	Q18	Skill Enhancement Programmes
Q9	Opportunities to Learn and Grow	Q19	Usage of ICT Tools
Q10	Dissemination of Learning Outcomes	Q20	Quality of Teaching-Learning Process

Question-wise Scores (in 0 to 4 scale)



Students' Response Statistics



Observations from the Survey

1. More number of Students have rated above Satisfactory level on the Quality of Teaching Learning Process
2. Students have expressed the fairness of the Internal and End Semester Evaluation
3. Students have rated high about the efforts made by the Institute/ Teachers to Conduct Industry Readiness Programme on soft skills, Life skills and Employability skills
4. Mentoring activities are well rated by more than 75 % of the Students
5. Innovative Practices used for Teaching and Learning are rated high by the maximum number of Students
6. Students expressed to have more Opportunity in Internship, Student Exchange and Field Visit
7. Students expect Multiple Opportunities to Learn and Grow

Action taken Report on the Survey

Based on the analysis of Student Satisfaction Survey few areas where the Institution/Departments/Faculty Members to focus were identified and necessary actions were taken

Students expressed to have more Opportunity in Internship, Student Exchange and Field Visit:

- Signing of MoU with more Industries are focused
- Effective Utilization of Opportunities by AICTE Internshala for Student Interns
- Collaboration with Reputed Institutes for Student Exchange and Internship are planned
- Field Visits for all the Students are planned

Students expect Multiple Opportunities to Learn and Grow:

- Higher Education Cell has initiated to provide additional Language skills like Japanese, GATE awareness programme to more Students
- More Value Added/Skill Development Courses (VASD) are planned to learn on Advanced and Emerging areas.
- More programmes on Patent Filing, Start Up in Product Design, Entrepreneurship and Social Responsibilities are planned and scheduled for maximum Participation of Students

The Survey has provided the opportunities to understand better on the outcome of various activities and the acceptance level of the Students. The Survey certainly helps the Institution to plan for further activities.

PRINCIPAL

PRINCIPAL

MUTHAYAMMA ENGINEERING COLLEGE
(AUTONOMOUS)
RASIPURAM-637 408, NAMAKKAL Dist
TAMILNADU